



southsea

COASTAL SCHEME



ART COMPETITION

Why is the Southsea Coastal Scheme important to you?

Create a design that shows why it is so important that the Southsea seafront is protected from possible flood damage!

You have until **4.00 pm** on **Tuesday 30th November 2021** to enter the competition.

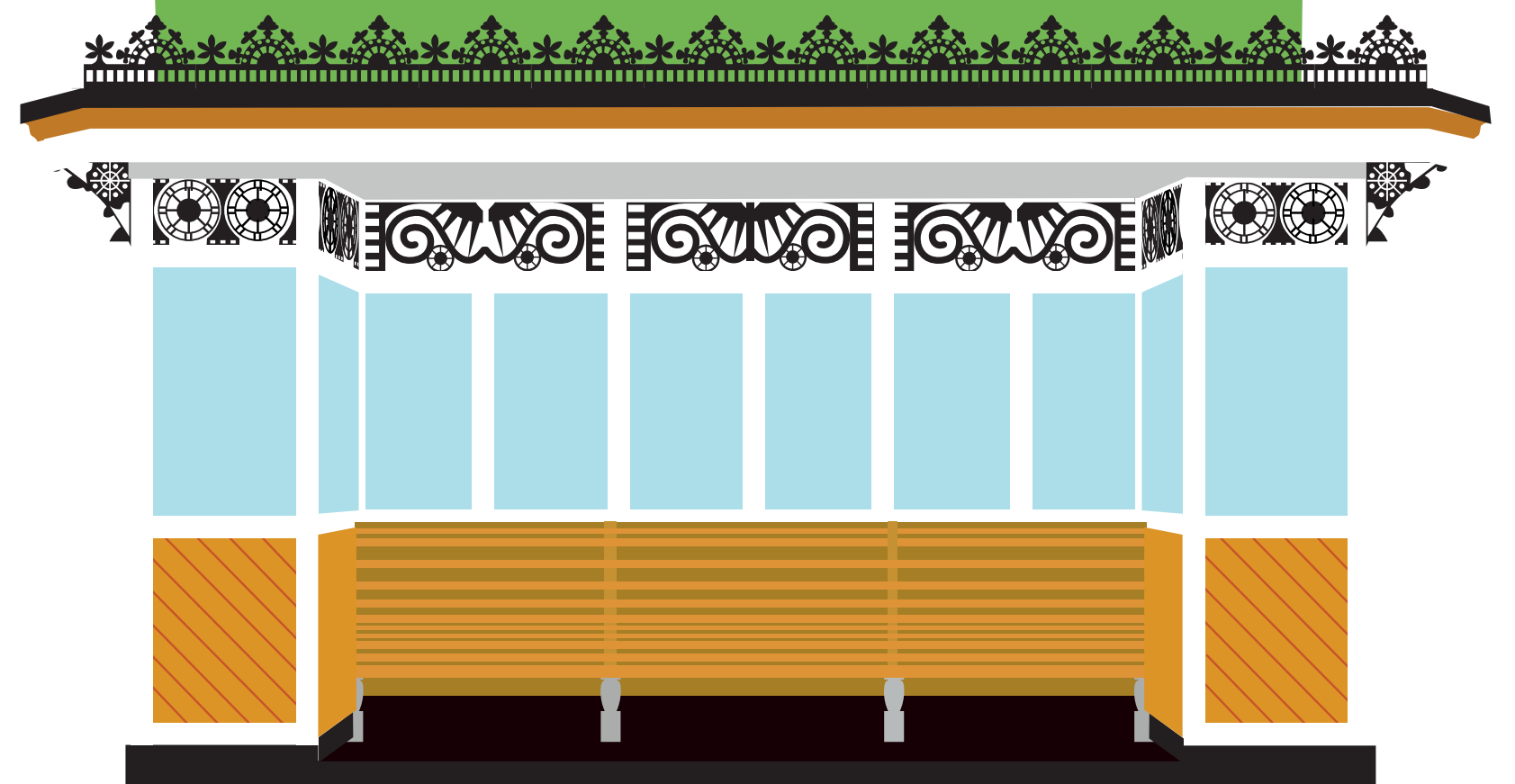
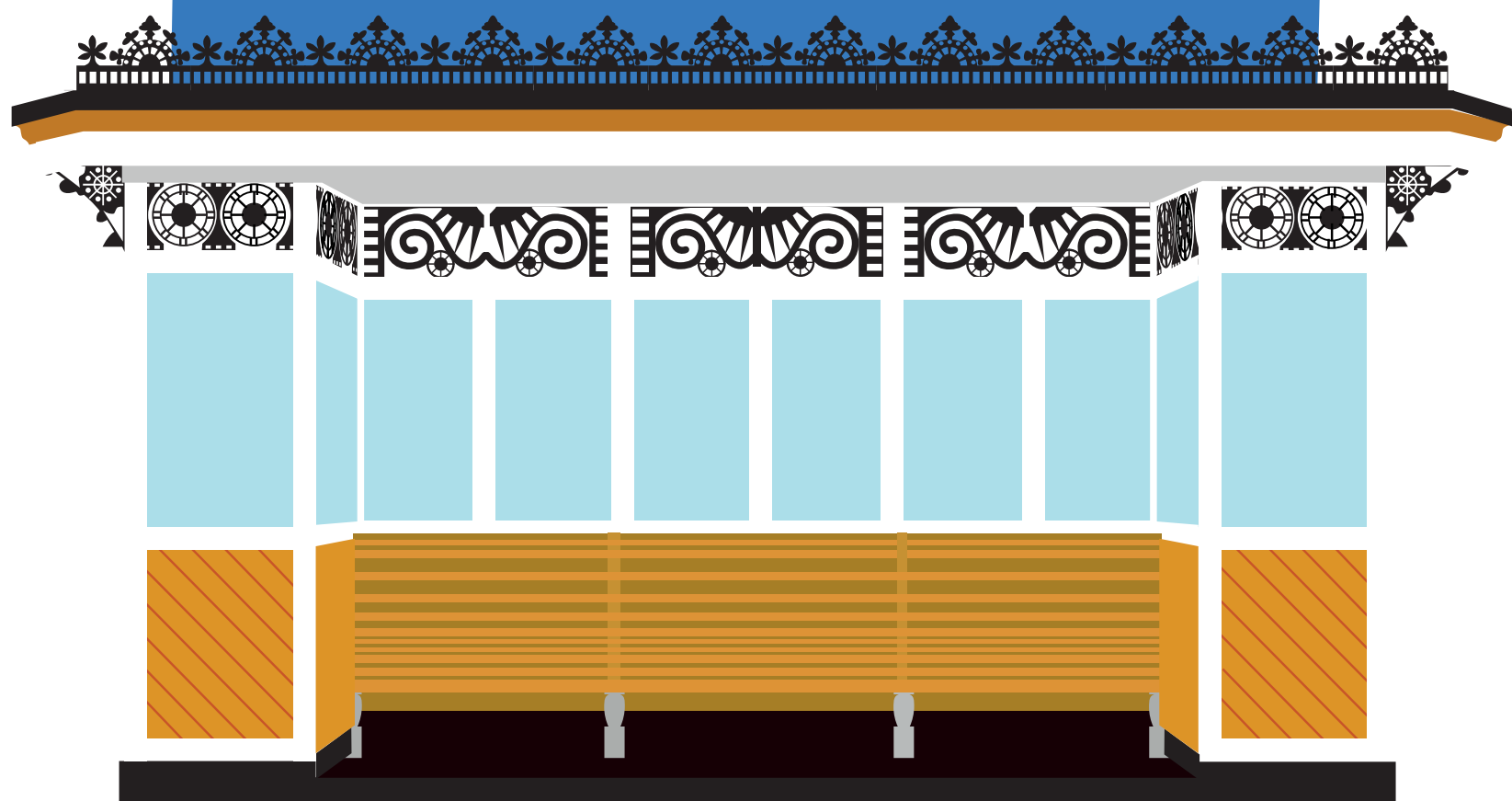
RULES

- Artwork should be in A4 or max. A3 size
- Entries can be created digitally, as a drawing or painting or an image montage
- All entries must include the artist's full name, class, year group and school name
- Winners' artwork will be displayed on the Southsea Castle construction site hoardings in 2022/2023

CATEGORIES

- Years R, 1 and 2
- Years 3 to 6
- Years 7 to 9
- Years 10 to 11

A winner and runner up will be selected from each category.



Please send your artwork by post (or hand in) to Southsea Coastal Scheme Project Office marked **"SOUTHSEA COASTAL SCHEME ART COMPETITION"** Pier Road, Southsea, Portsmouth, PO5 3AP or email to southseacoastalscheme@portsmouthcc.gov.uk

Have your artwork displayed on the Southsea Coastal Scheme hoardings at Southsea Castle for everyone to see!

The Southsea Coastal Scheme is the UK's largest local authority-led coastal defences project, worth more than £100m. It will stretch for 4.5km from Old Portsmouth to Eastney, and help to reduce the risk of flooding to more than 10,000 homes and 700 businesses.

The Southsea Coastal Scheme Art Competition is free to enter, aimed at schoolchildren in Southsea of all abilities and could be a great follow-on activity to educational work about climate change, sea level rise and flood protection.

For full terms & conditions and any further information please visit southseacoastalscheme.org.uk/resources



southseacoastalscheme.org.uk

southseacoastalscheme@portsmouthcc.gov.uk

